

Tularemia: Microbiologic Triage

GROWTH

- slow grower, minimum 2-3 days, up to 14 days, 2-4 mm
- often requires cysteine-enriched media to grow (e.g. BCYE with cysteine, Chocolate agar with Isovitalex, Cysteine heart agar, other)
- may see slow, poor or no growth on BAP (Sheep blood agar);
- may see strains which grow very well on BAP, 24h-48h but require cysteine-enriched media on sub-culture

GRAM STAIN

- isolate or in tissue
- tiny or small, poorly staining, thin gram-negative coccobacilli or rods (0.2-0.7 μ m)
- suggestive if patient has clinical history consistent with *Francisella* infection

Tularemia: Microbiologic Triage

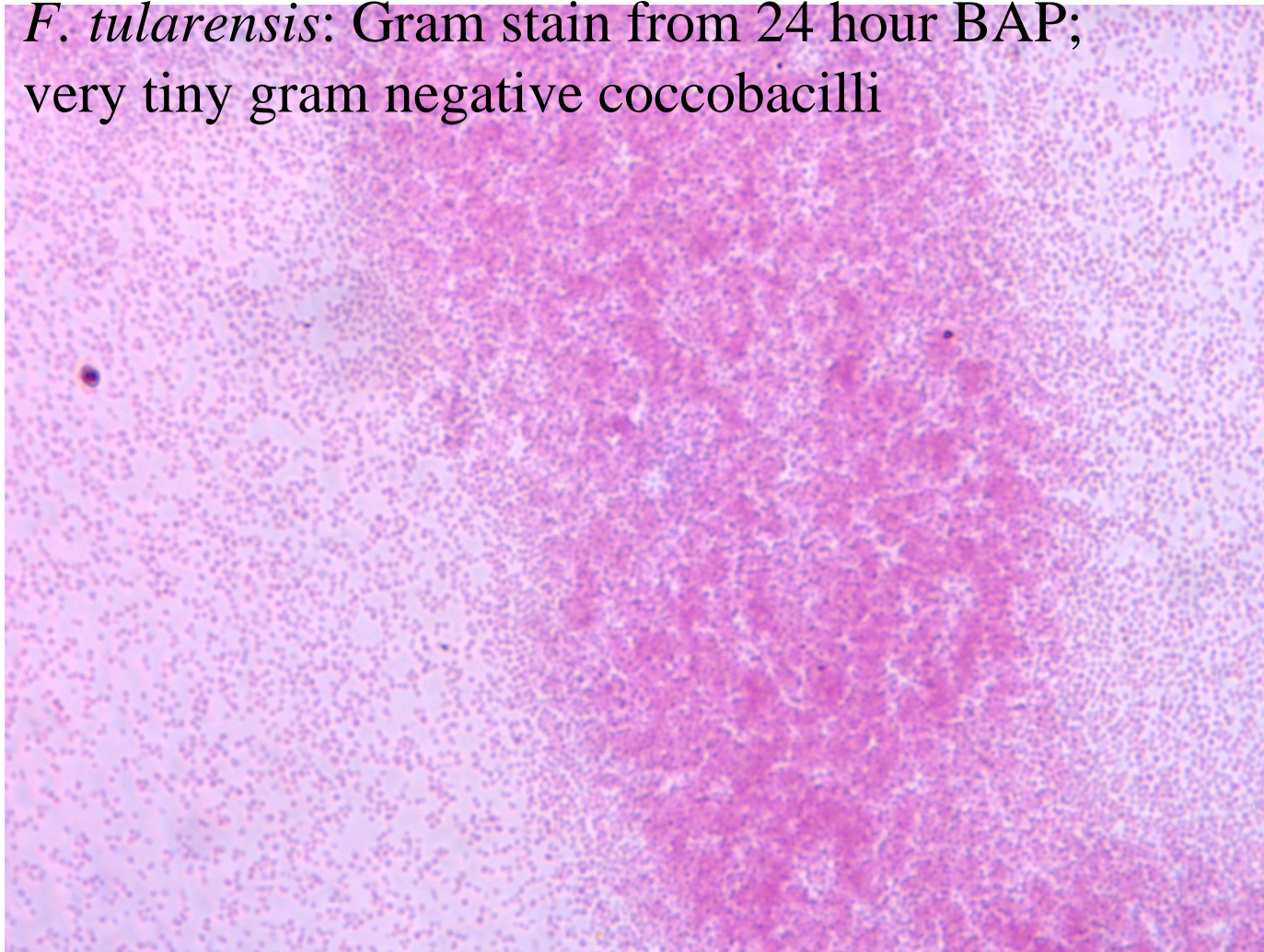
Catalase negative or weak positive

Oxidase negative

Biochemically inert – urease negative

Tularemia: Microbiologic Triage

F. tularensis: Gram stain from 24 hour BAP;
very tiny gram negative coccobacilli



Tularemia: Microbiologic Triage

F. tularensis: poor growth or no growth on BAP; better growth on BCYE or other cysteine enriched agars (e.g. supplemented chocolate agar)

